



HECO-UNIX-top Cladding screw

THE UNIQUE CLADDING SCREW
WITH CONTRACTION EFFECT



© Christian Eblenkamp/artur

***HECO-UNIX-top with variable thread pitch
Quick and easy mounting thanks to contraction effect***

HECO-UNIX-top Cladding screw

- Fast, economic and efficient assemblance: mounting and fixing of the timber board with just one screw
- Gapless joining of cladding thanks to the HECO-UNIX full thread
- Increased pull out values thanks to the HECO-UNIX full thread
- Permanent fixation thanks to the HECO-UNIX full thread
- Aesthetically pleasing fixing with the small raised countersunk head
- Reduction of trapped moisture thanks to the small head
- Permanent fixing and conform to standards for the utility class 3 in stainless steel A2
- CE-marking based on ETA-11/0452



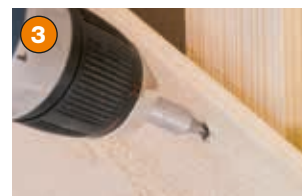
CONTRACTION EFFECT



1
The variable pitch of the HECO-UNIX full thread starts to work

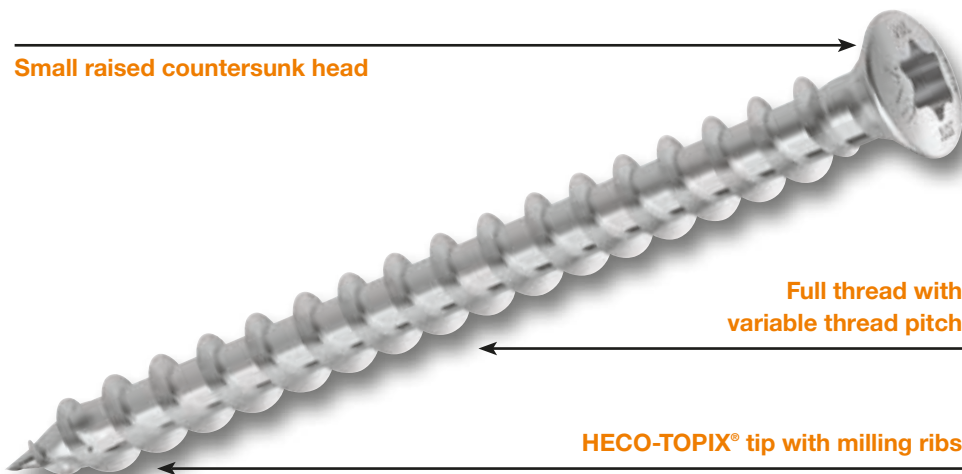


2
The smaller thread pitch means that the boards are firmly together pulled



3
Gap free axial fixing of the timber board via the HECO-UNIX full thread

Small raised countersunk head



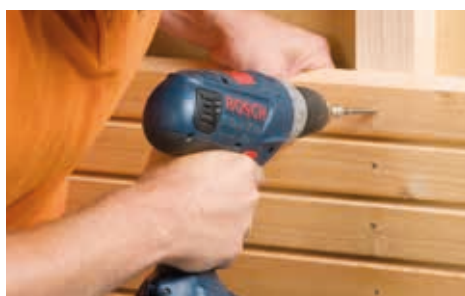
Full thread with variable thread pitch

HECO-TOPIX® tip with milling ribs

Timber façades are becoming increasingly popular in both new builds and renovations. This application places high demands on fastenings. The façade must be securely fixed to the sub-structure and the fixings should be invisible or attractive to look at. In addition, the structure must be permanently sound if it is constantly exposed to the weather. The HECO-UNIX-top façade screw is the perfect solution to all of these requirements. The full thread with its variable thread pitch reliably draws the façade boards onto the sub-structure without the head having to be countersunk deep into

the timber. The façade is secured axially via the thread, which increases the pull-out strength. This results in fewer fastening points and an ultimately more economical façade construction. Thanks to the full thread, the sole function of the head is to fit the screw drive. As such, the HECO-UNIX-top façade screw has a small raised head, which allows simple, concealed installation preventing any water penetration through the screw. The screws are made of stainless steel A2, which safely eliminates the problem of corrosion caused by exposure to weather – for instance, rusting screws.

APPLICATION EXAMPLES



Secure and reliable façade fixing



Louvred façades

PRODUCT RANGE

Stainless steel A2 1.4567		HECO-UNIX-top Cladding screw, raised countersunk head full threaded, T-drive, stainless steel A2, coated			
Size D x L [mm]	Article no.	Recess	Box type	Packing unit [pcs.]	
4,5 x 50	45898	T-20	VAR 2	500	
4,5 x 60	45900	T-20	VAR 2	500	
4,5 x 70	45902	T-20	VAR 3	200	
4,5 x 80	45904	T-20	VAR 3	200	
5,0 x 40	45427	T-20	VAR 2	200	
5,0 x 50	45429	T-20	VAR 2	200	
5,0 x 60	45431	T-20	VAR 2	200	
5,0 x 70	45433	T-20	VAR 3	200	
5,0 x 80	45435	T-20	VAR 3	200	



HECO-Schrauben GmbH & Co. KG
 Dr.-Kurt-Steim-Straße 28, D-78713 Schramberg
 Tel.: +49 (0) 74 22 / 9 89-0
 Fax: +49 (0) 74 22 / 9 89-200
 E-mail: info@heco-schrauben.de
 Internet: www.heco-schrauben.com



Your specialist dealer: